

GCDC130 ECO STAR Slimline-Displaykühlschrank

GCDC130 ECO STAR Slimline-Display refrigerator

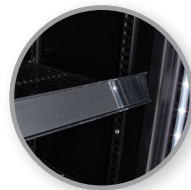


STANDARD FARBEN / STANDARD COLOUR



135124

AUSSTATTUNG / FEATURES



Product video

Ausstattung

- Stromsparende LED - Innenbeleuchtung
- Leuchtdisplay
- Selbstschließende Glastür
- Schloss mit Schlüssel
- Manuelle Temperaturkontrolle
- Doppeltes Sicherheitsglas
- Isolierende Argon Tür
- 6 höhenverstellbare Gitterregale
- Scannerschienen

Ausstattung optional

- Branding
- Aluminiumrahmen
- Individuelle Farbe
- Bessere Energieeffizienz

Features

- Energy-saving LED - Inside illumination
- Advertising display
- Self-closing glass door
- Lock with key
- Manual temperature control
- Double glazed glass door
- Insulating Argon door
- 6 adjustable wire shelves
- Scanner rails

Optional Features

- Branding
- Aluminium frame
- Custom colour
- Better energy efficiency

Technische Daten / Technical data

Volumen / Volume	150 L
Gewicht / Weight	71,0 kg
Außenmaße / Exterior Dimensions	1905 x 390 x 420 mm (H x B x T) / (H x W x D)
Innenmaße / Interior Dimensions	1405 x 325 x 308 mm (H x B x T) / (H x W x D)

Klimaklasse / Climate class	N
Kühlmittel / Refrigerant	R600a (65g)
Temperaturbereich / Temperature range	0°C-10°C
Abtauart / Type of Defrost	Manuell / Manual
Geräuschslevel / Noise Level	38dB (A)
Anschluss / Voltage	230V / 50Hz / 105W
Energieverbrauch / Energy consumption	1,08 kWh / 24h



Environmentally friendly



Energy Saving



LED



100x Bottels à 0,33 ml



B optional